

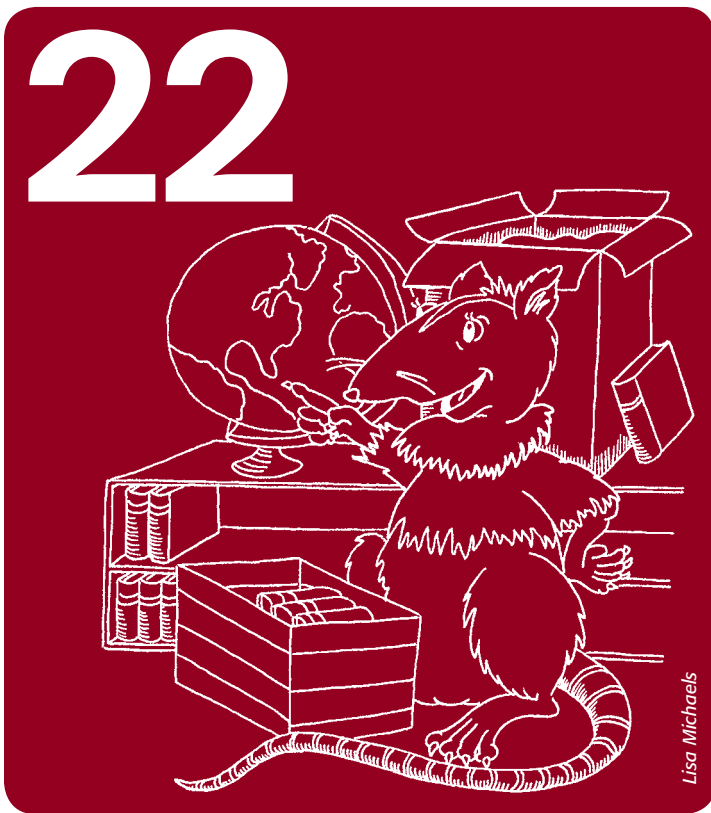


scbwi
society of children's book writers & illustrators



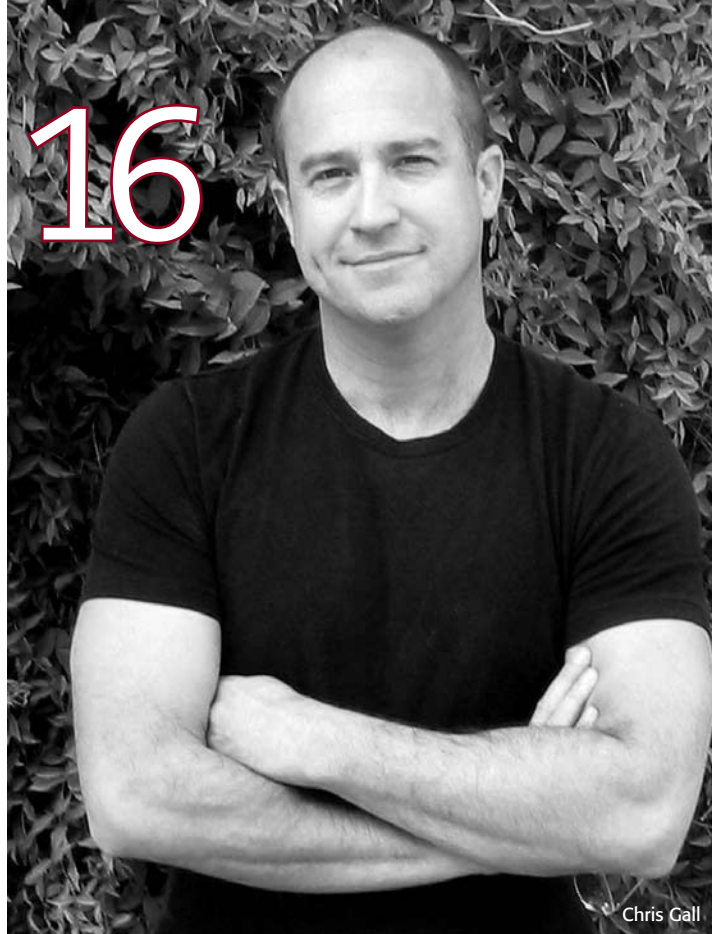
BULLETIN
nov | dec 2008

features



- 17** IRS Increases Standard Mileage Rates
♦ Julian Block
- 18** How to Find the Right Agent ♦ Joëlle Anthony
- 20** Writing and the Winter Blues
♦ Lindsay Woolman
- 22** An Insider's View ♦ Francine Poppo Rich

16



Chris Gall

departments

- 4 News & Notes
- 8 DVD Reviews
- 9 Here, There & Everywhere
- 10 The Truth About School Visits
- 11 Poem: *The Assignment*
- 12 SCBWI Success Story
- 13 Countdown to the SCBWI Winter Conference
- 13 SCBWI Global Initiatives Success Stories
- 14 Art Tips
- 15 The Illustrator's Perspective
- 16 Illustrator Profile
- 24 People
- 28 Regional Events
- 31 Publisher's Corner
- 34 To Market
- 35 Legally Speaking

scbwi
 society of children's book writers & illustrators

EDITOR STEPHEN MOOSER & LIN OLIVER
NY CONTRIBUTING EDITOR CONNIE C. EPSTEIN 631.928.1425
COPY EDITOR SHERRILL KUSHNER
PEOPLE EDITOR REVA SOLOMON people@scbwi.org
MARKETING ADVISOR SUSAN SALZMAN RAAB sraab@raabassociates.com
DIRECTOR, COMMUNICATIONS & DESIGN/WEBMASTER AARON HARTZLER
DESIGNER MIKE WATTERS
CONSULTING EDITOR SAM WASSON

BOARD OF ADVISORS
 JUDY BLUME, Author; PRISCILLA BURRIS, Illustrator
 BRUCE COVILLE, Author; PAT CUMMINGS, Illustrator; ERZSI DEÁK, Author
 DAVID DIAZ, Illustrator; JUDITH ROSS ENDERLE, Author; SID FLEISCHMAN, Author
 JAMES CROSS GIBLIN, Author/Editor; STEPHANIE JACOB GORDON, Author
 ESTHER HERSHENHORN, Author; DOROTHY LEON, Author; ARTHUR A. LEVINE, Editor/Author
 JEN MCVEITY, Author; WALTER DEAN MYERS, Author; LINDA SUE PARK, Author
 Q.L. PEARCE, Author; JERRY PINKNEY, Illustrator; ROBERT SABUDA, Illustrator
 BARBARA SEULING, Author/Illustrator; JOHN SHELLEY, Illustrator
 FRANK SLOAN, Editor/Author; MELISSA STEWART, Author; BRIDGET STEVENS-MARZO, Illustrator
 LISA YEE, Author; JANE YOLEN, Author; CECELIA YUNG, Art Director; CHERYL ZACH, Author
 TOMIE DEPAOLA, Illustrator/Author (Board Member Emeritus)

US REGIONAL ADVISOR CHAIR CHERYL ZACH cherylzach@scbwi.org
INTERNATIONAL REGION ADVISOR CHAIR ERZSI DEÁK erzsideak@scbwi.org
ILLUSTRATION COORDINATOR PRISCILLA BURRIS burrisdrew@sbcglobal.net
INTERNATIONAL ILLUSTRATION LIASON BRIDGET STEVENS-MARZO b@bridgetstevens.com
REGIONAL EVENTS COORDINATOR REBECCA L. GOLD rebecca@familiargold.com
MAGAZINE MERIT COORDINATOR DOROTHY LEON 805.579.0317

EXECUTIVE OFFICE 323.782.1010 or scbwi@scbwi.org
MEMBERSHIP & OFFICE ADMINISTRATOR GEE CEE ADDISON
WEBMASTER/COMMUNICATIONS/DESIGN AARON HARTZLER
CONFERENCE COORDINATOR/AWARDS ADMINISTRATOR LIZ BROWN
R.A. LIASON/TECHNOLOGY ADVISOR SALLY CROCK

COVER ART ©2008 CHRIS GALL

The *SCBWI Bulletin* is a bimonthly publication of the Society of Children's Book Writers and Illustrators, a professional international organization for writers and illustrators of children's literature, located at 8271 Beverly Boulevard, Los Angeles, CA 90048. Membership dues are \$75 for the first year and \$60 each renewing year. Send email to membership@scbwi.org for general queries as well as membership and conference information to webmaster@scbwi.org for website issues and questions. All content copyright ©2008. The *Bulletin* makes no specific endorsements of any books or products mentioned in its pages.

SUBMISSION The Bulletin welcomes submissions or articles of interest to our illustrators and writer members. Payment for full-length articles is \$50 plus a year's membership in the SCBWI. We also welcome illustration submissions. Payment for black and white art is \$25 per drawing. For illustrations we retain only first-time rights. For articles we take only one-time Bulletin and all SCBWI website rights. For submission guidelines, visit www.scbwi.org/bulletinsubs.htm.

SCBWI ONLINE Visit the SCBWI website at www.scbwi.org where you will find a calendar of events, regional information, and many other resources. Current SCBWI members have special access to the latest publications and the members-only Discussion Boards where you can participate in the SCBWI online community. Remember, this is your organization. Please send your suggestions and ideas to scbwi.org.

HEATH INSURANCE INQUIRIES TEIGIT (Cigna Plan), www.teigit.com or 800.886.7504.

CREDIT UNION INQUIRIES Community American Credit Union, 1125 Ambassador Drive, Kansas City, MO 64153, www.communityamericacu.com or 800.892.7957.

OFFICE SUPPLY DISCOUNT To request a catalog, visit www.penny-wise.com or call 800.942.3311.

HERTZ RENT-A-CAR DISCOUNT To receive a Hertz Discount Card, send a self-addressed stamped envelope to the SCBWI Executive Office, 8271 Beverly Boulevard, Los Angeles, CA 90048.